



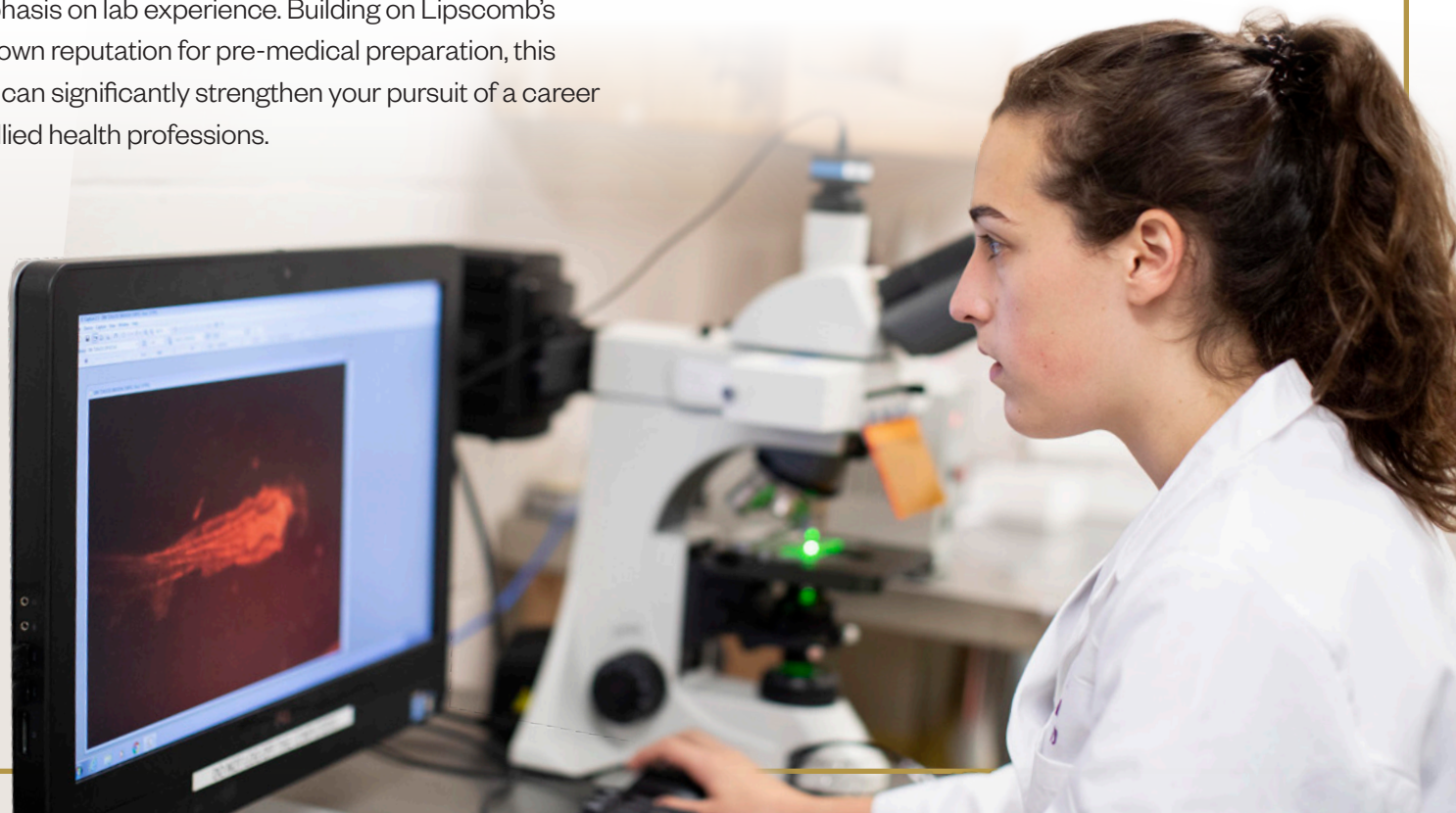
LIPSCOMB UNIVERSITY
COLLEGE of LIBERAL ARTS
& SCIENCES

Build experience through research.

As admission to graduate and professional schools becomes increasingly competitive, particularly in the health sciences, you need every advantage to set yourself apart from the crowd. Make yourself a more compelling candidate for medical school and doctoral programs or pursue a career in biomedical science with a graduate degree in Biomolecular Science from Lipscomb University.

Earn a degree that will give you a credential undergraduates just don't have—a research-based graduate degree with an emphasis on lab experience. Building on Lipscomb's well-known reputation for pre-medical preparation, this degree can significantly strengthen your pursuit of a career in the allied health professions.

Whether you want to pursue research science or the health sciences, our faculty will provide you with the additional knowledge and experience to make you a stronger applicant and a valuable asset in the marketplace. In fact, 77 percent of our graduates who apply to medical school earn acceptance, and 90 percent of graduates who apply to a Ph.D. program earn acceptance. Take this opportunity to increase your research experience and gain a competitive edge.



A full-page photograph of a male scientist with a beard and glasses, wearing a white lab coat over a blue collared shirt. He has his arms crossed and is smiling at the camera. The lab coat has "Linscom Biolog" embroidered on the left chest. In the background, there is a laboratory setting with shelves of bottles and a piece of scientific equipment, possibly a pipette or a small scale, in the lower right foreground. A semi-transparent dark grey banner is overlaid on the right side of the image, containing white text.

**Equipping students
with research
experience to further
education and
advance career
opportunities.**

Master of Science in Biomolecular Science

Lipscomb's M.S. in Biomolecular Science will challenge you with a range of courses in biostatistics, ethics and biomolecular laboratory techniques, and additional specific content courses that emphasize cancer biology, molecular biology, genetics, immunology and infectious disease. You will learn from faculty who are not only extensively published and performing cutting-edge research, but mentors deeply committed to your academic, professional and spiritual preparation.



Specialize your course of study by choosing between two concentrations.

- **Human Disease:** For students interested in clinical science or the allied health professions, the Human Disease concentration focuses on the molecular basis of human disease and requires students to complete a literature-based capstone project.
- **Laboratory Research:** Students in the Laboratory Research concentration participate in biomedical research and complete a bench research capstone project, which can strengthen medical school applications and consideration for jobs in biotechnology.



A versatile degree. A variety of options.

This lab science degree was specifically designed to make you job-ready, no matter where your career plans might take you. It's the perfect master's degree for those interested in:

- Medical school
- Dental school
- Pharmacy school
- Veterinary school
- Biotech careers
- Graduate programs in biomedical research
- Other allied health professions



“The program in its entirety taught me how to be confident in myself as well as in my knowledge. I learned a wide array of research techniques and how to effectively apply those in an independent lab. Lipscomb is family and the faculty cares about each of their students. This family pushed me to pursue my dream.”

—JACLYN CORSO '17
M.D. STUDENT

Questions?

Call us at **615.966.5330**, visit us online at **lipscomb.edu/bms** or email **emily.tjahjono@lipscomb.edu** for more information.



College of Liberal Arts & Sciences
One University Park Drive
Nashville, TN 37204-3951

